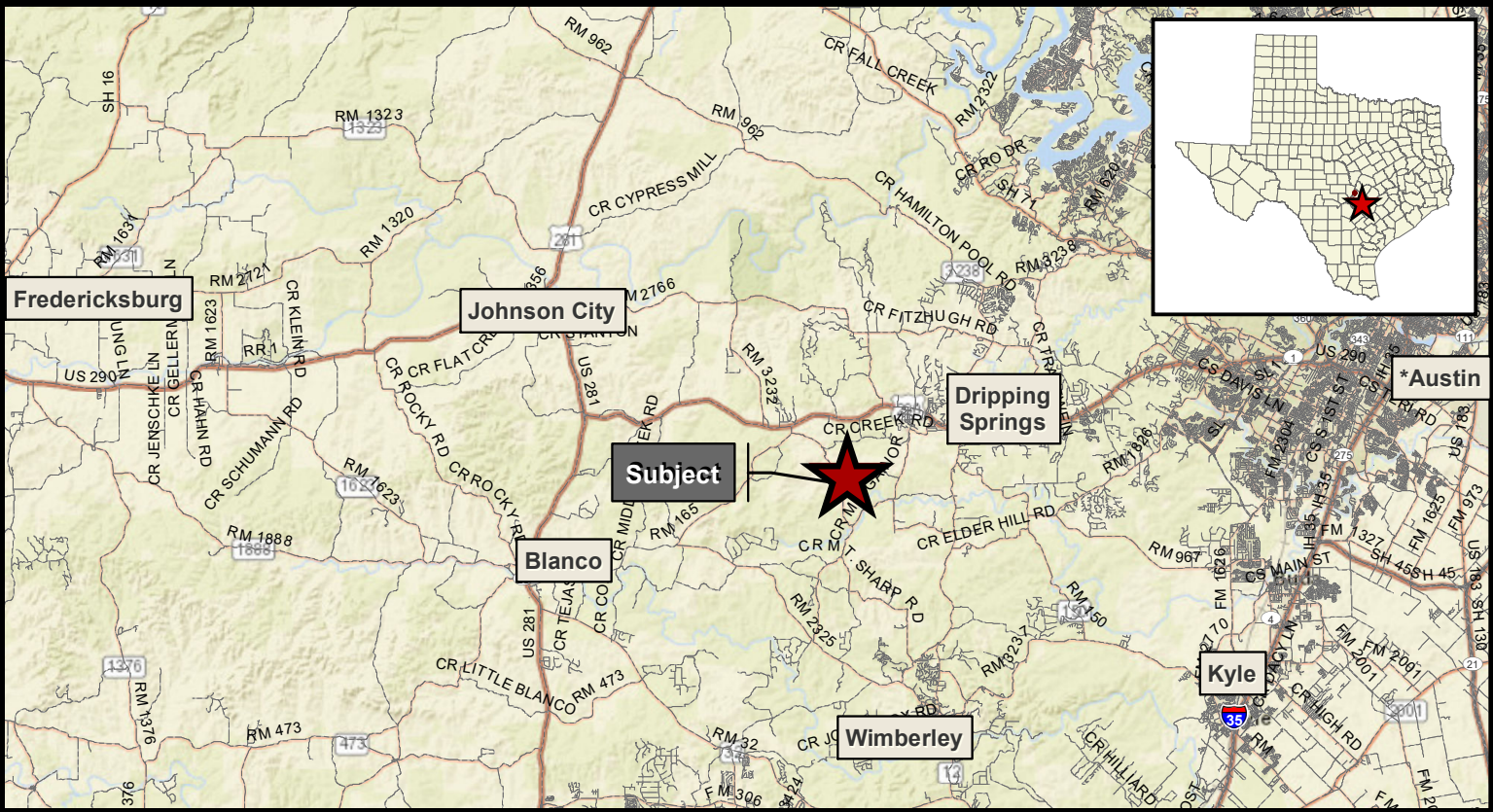
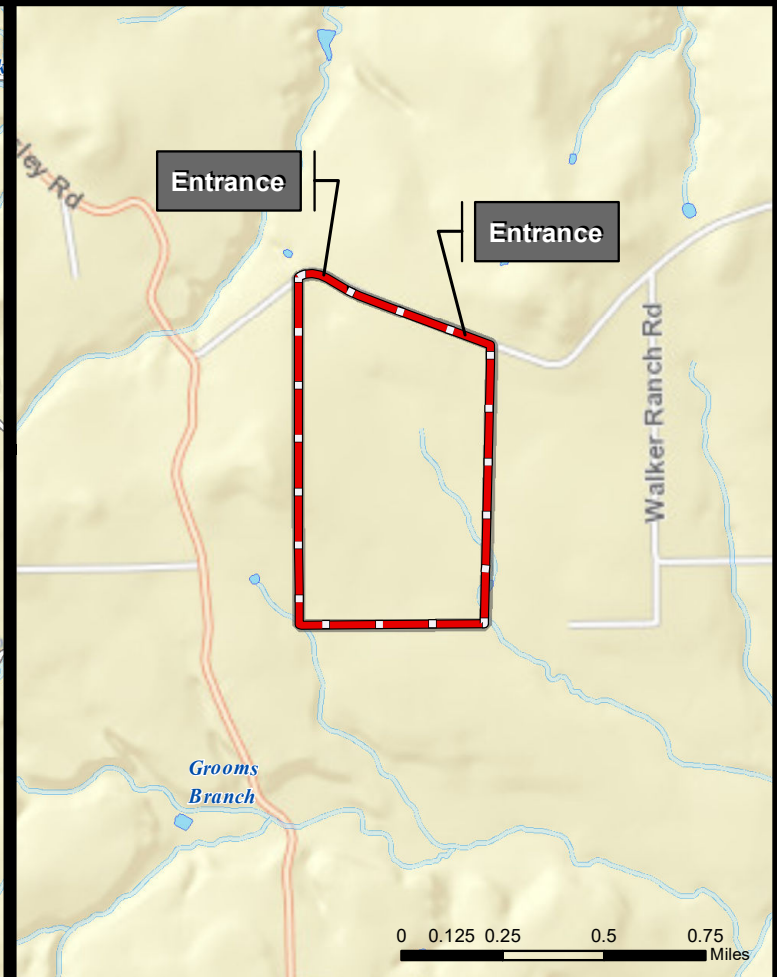
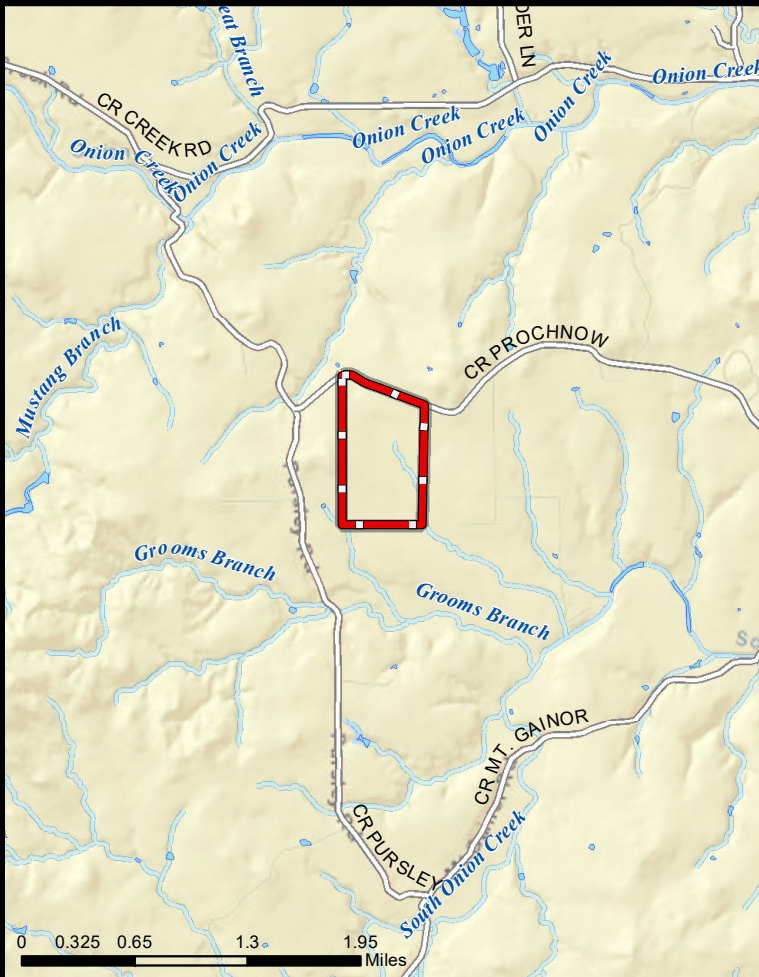
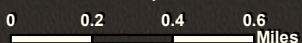


PROCHNOW RIDGE RANCH | 169.53 ± AC | HAYS



1 inch = 2,500 feet

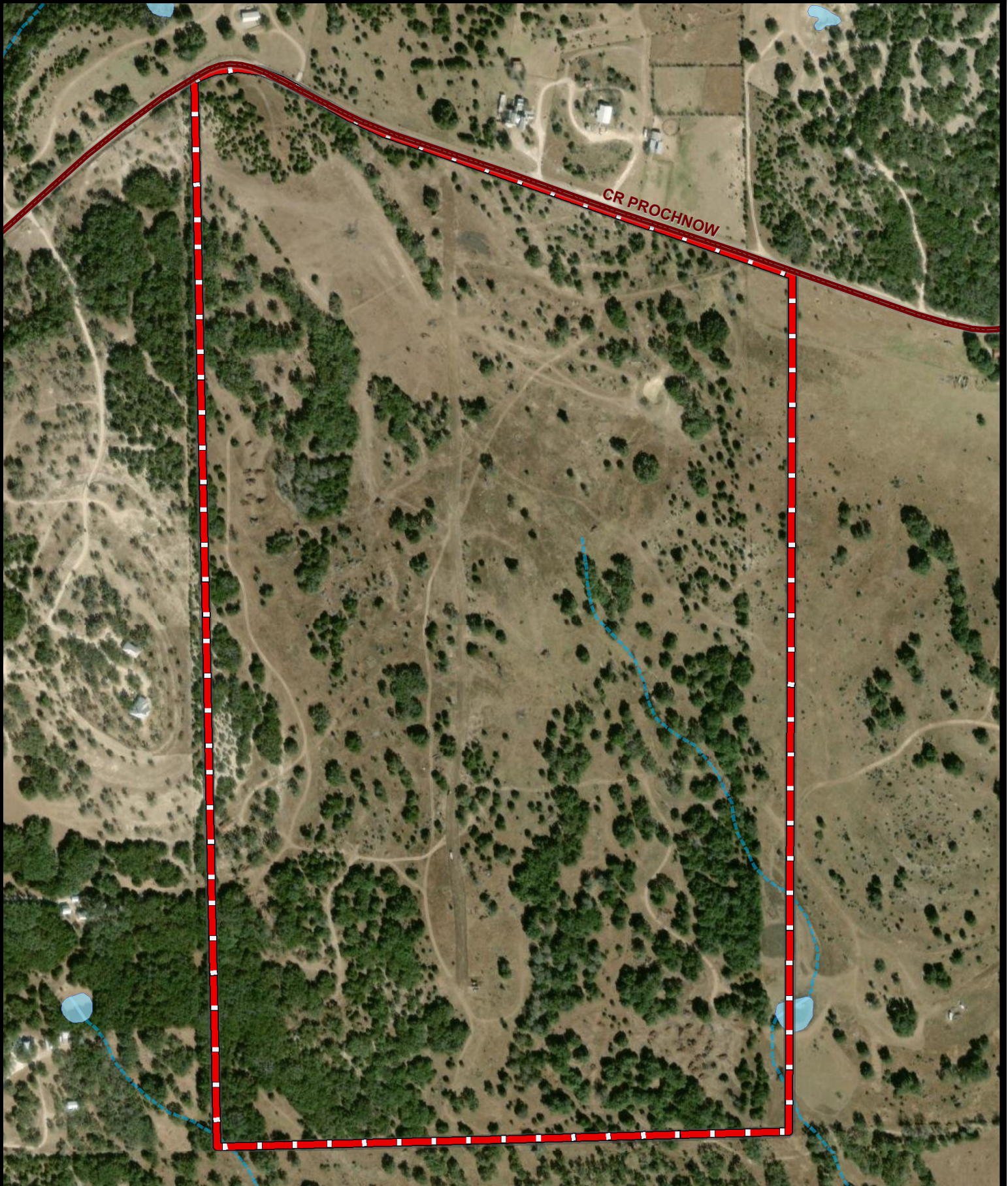


302 E. Main Street, Johnson City, Texas 78636
Office (830) 481-4444
www.AndersRanchRealty.com



Anders Realty
PURVEYORS OF FINE TEXAS RANCHES

PROCHNOW RIDGE RANCH | 169.53 ± AC | HAYS



CR PROCHNOW

1 inch = 458.33 feet

0 0.04 0.08 0.12 Miles



302 E. Main Street, Johnson City, Texas 78636

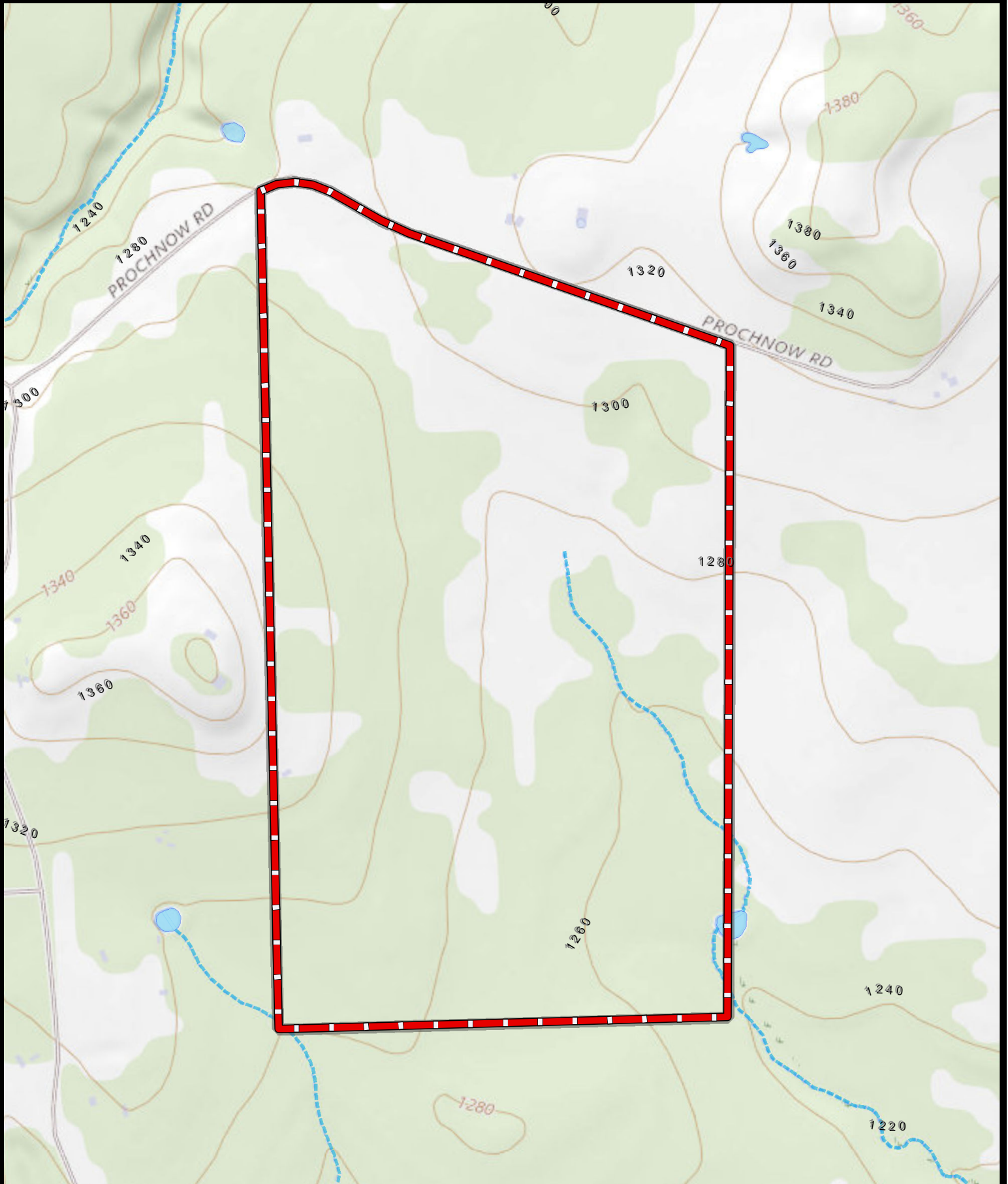
Office (830) 481-4444

www.AndersRanchRealty.com



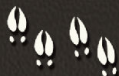
Anders Realty
PURVEYORS OF FINE TEXAS RANCHES

PROCHNOW RIDGE RANCH | 169.53 ± AC | HAYS



1 inch = 583.33 feet

0 0.05 0.1 0.15 Miles



302 E. Main Street, Johnson City, Texas 78636

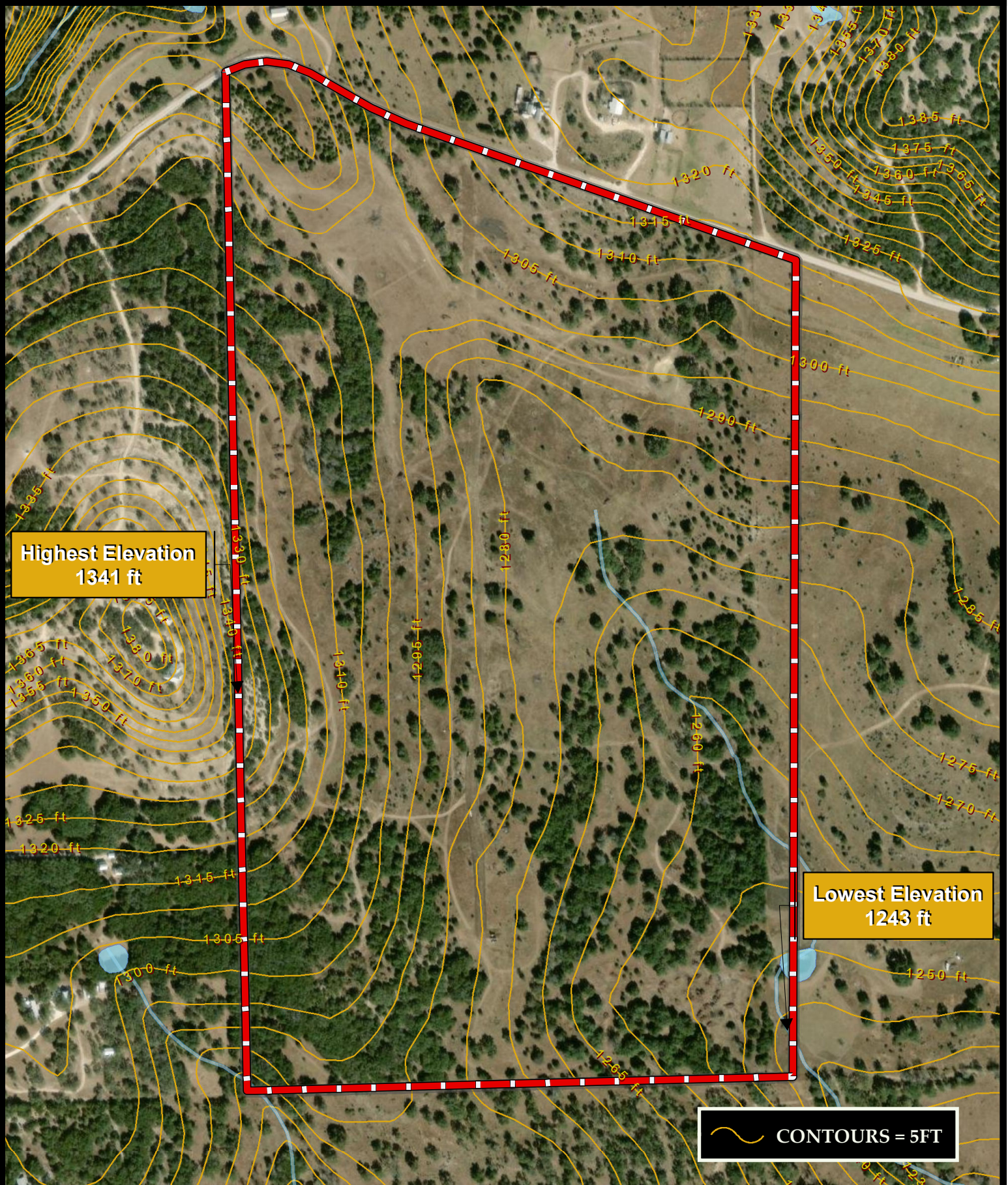
Office (830) 481-4444

www.AndersRanchRealty.com



Anders Realty
PURVEYORS OF FINE TEXAS RANCHES

PROCHNOW RIDGE RANCH | 169.53 ± AC | HAYS



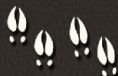
Highest Elevation
1341 ft

Lowest Elevation
1243 ft

CONTOURS = 5FT

1 inch = 479.17 feet

0 0.04 0.08 0.12 Miles



302 E. Main Street, Johnson City, Texas 78636

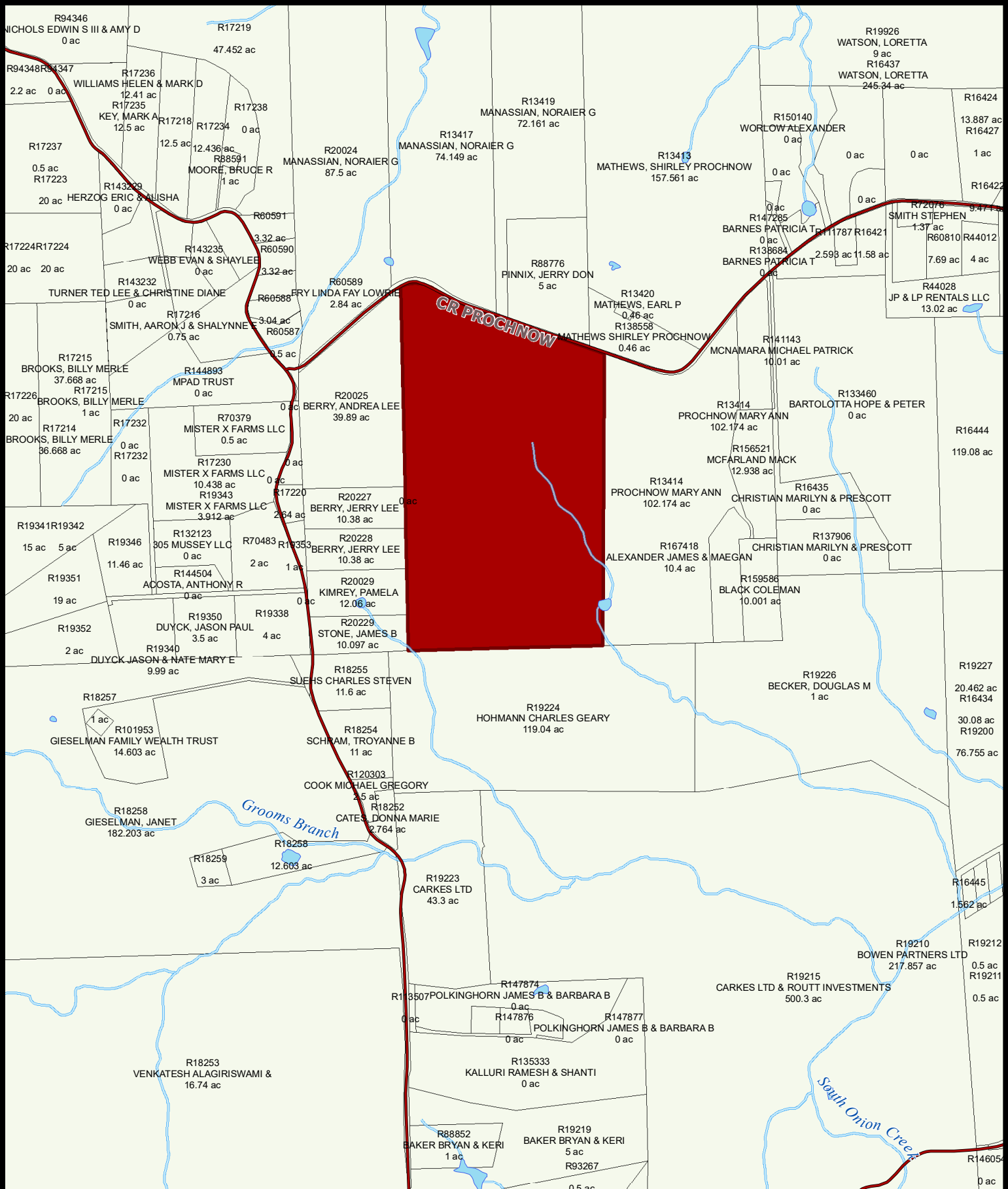
Office (830) 481-4444

www.AndersRanchRealty.com

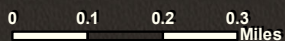


Anders Realty
PURVEYORS OF FINE TEXAS RANCHES

PROCHNOW RIDGE RANCH | 169.53 ± AC | HAYS



1 inch = 1,348.99 feet

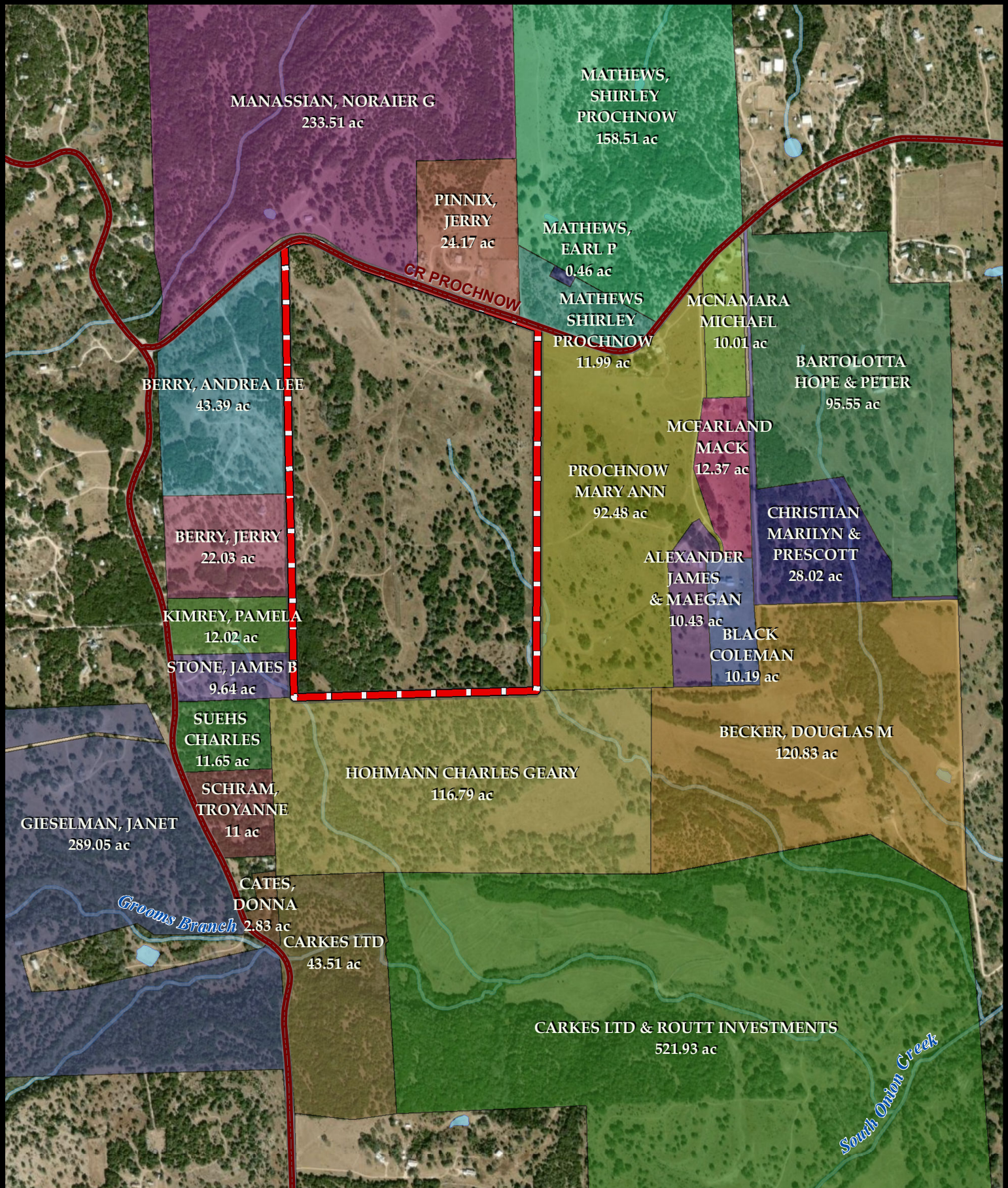


112 N. Edison St., Fredericksburg, TX 78624
 Jeremy Lacy (830) 225-0595
www.AndersRanchRealty.com



Anders Realty
 PURVEYORS OF FINE TEXAS RANCHES

PROCHNOW RIDGE RANCH | 169.53 ± AC | HAYS



1 inch = 1,083.91 feet

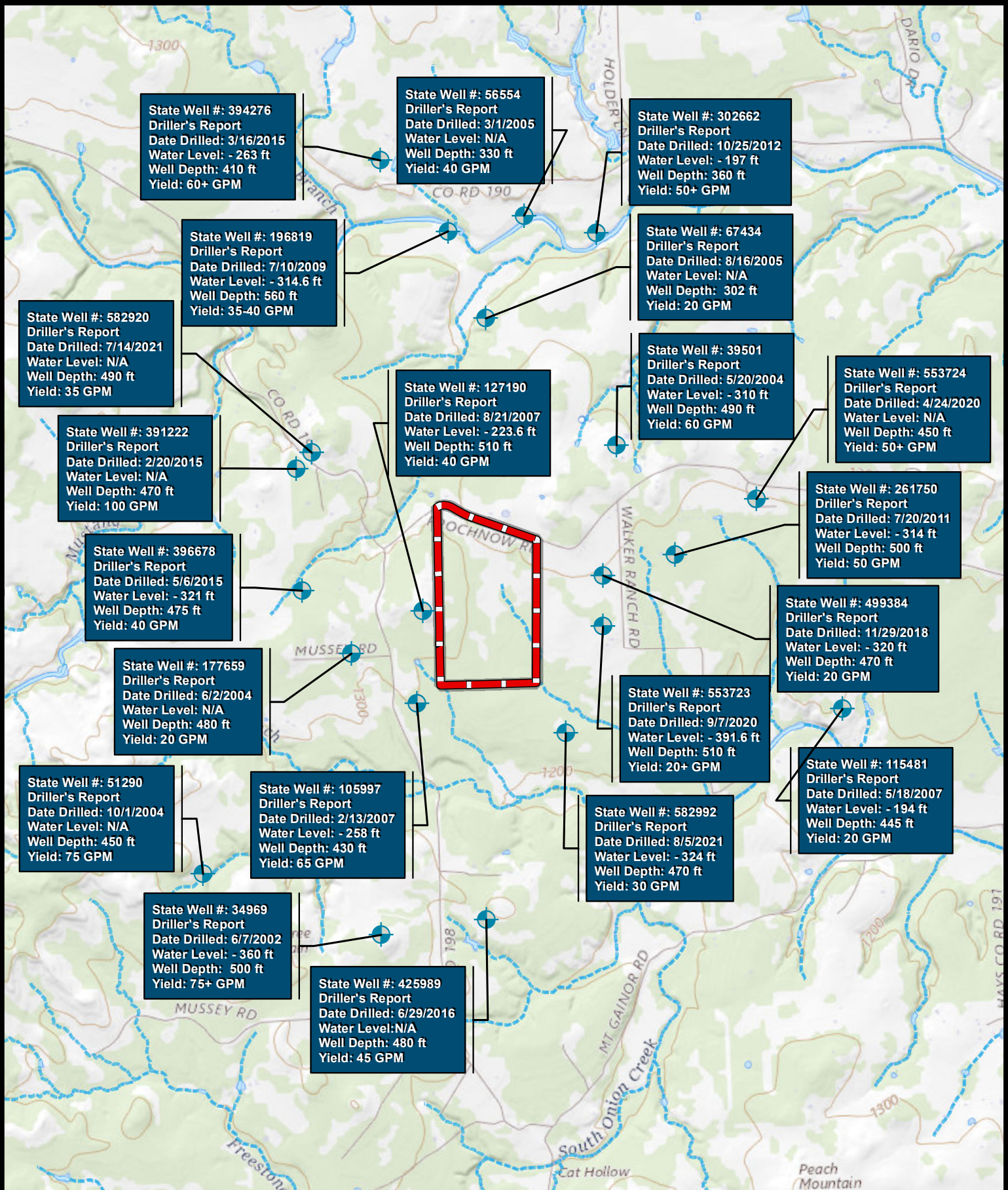


302 E. Main Street, Johnson City, Texas 78636
Office (830) 481-4444
www.AndersRanchRealty.com

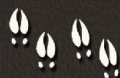
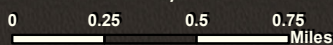


Anders Realty
PURVEYORS OF FINE TEXAS RANCHES

PROCHNOW RIDGE RANCH | 169.53 ± AC | HAYS



1 inch = 2,750 feet



302 E. Main Street, Johnson City, Texas 78636

Office (830) 481-4444









www.AndersRanchRealty.com

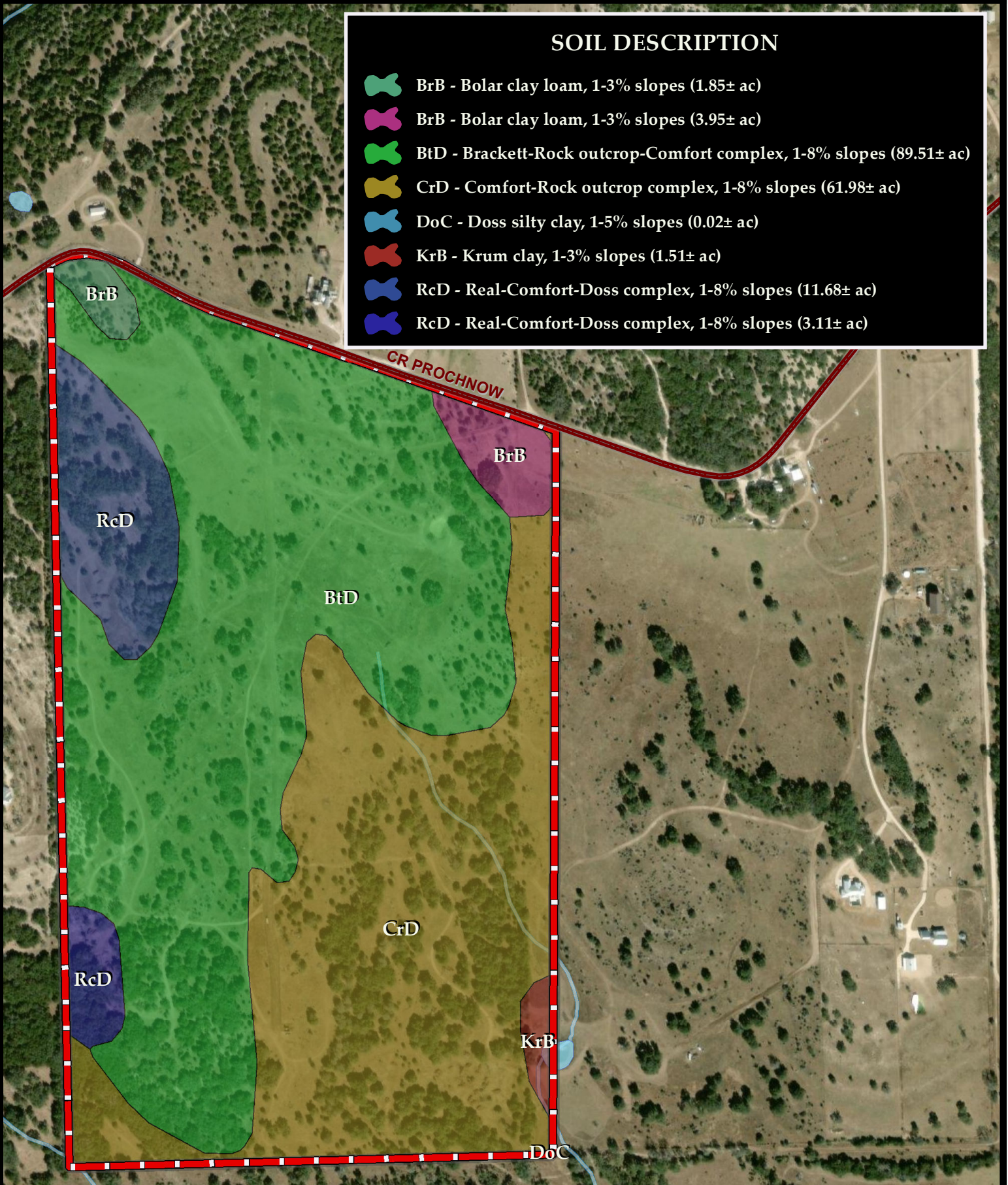


Anders Realty
PURVEYORS OF FINE TEXAS RANCHES

PROCHNOW RIDGE RANCH | 169.53 ± AC | HAYS

SOIL DESCRIPTION

-  BrB - Bolar clay loam, 1-3% slopes (1.85± ac)
-  BrB - Bolar clay loam, 1-3% slopes (3.95± ac)
-  BtD - Brackett-Rock outcrop-Comfort complex, 1-8% slopes (89.51± ac)
-  CrD - Comfort-Rock outcrop complex, 1-8% slopes (61.98± ac)
-  DoC - Doss silty clay, 1-5% slopes (0.02± ac)
-  KrB - Krum clay, 1-3% slopes (1.51± ac)
-  RcD - Real-Comfort-Doss complex, 1-8% slopes (11.68± ac)
-  RcD - Real-Comfort-Doss complex, 1-8% slopes (3.11± ac)



1 inch = 541.67 feet

0 0.05 0.1 0.15 Miles



112 N. Edison St., Fredericksburg, TX 78624
Jeremy Lacy (830) 225-0595
www.AndersRanchRealty.com



Anders Realty
PURVEYORS OF FINE TEXAS RANCHES