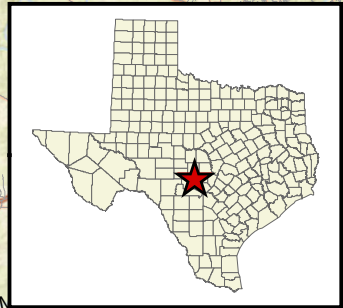
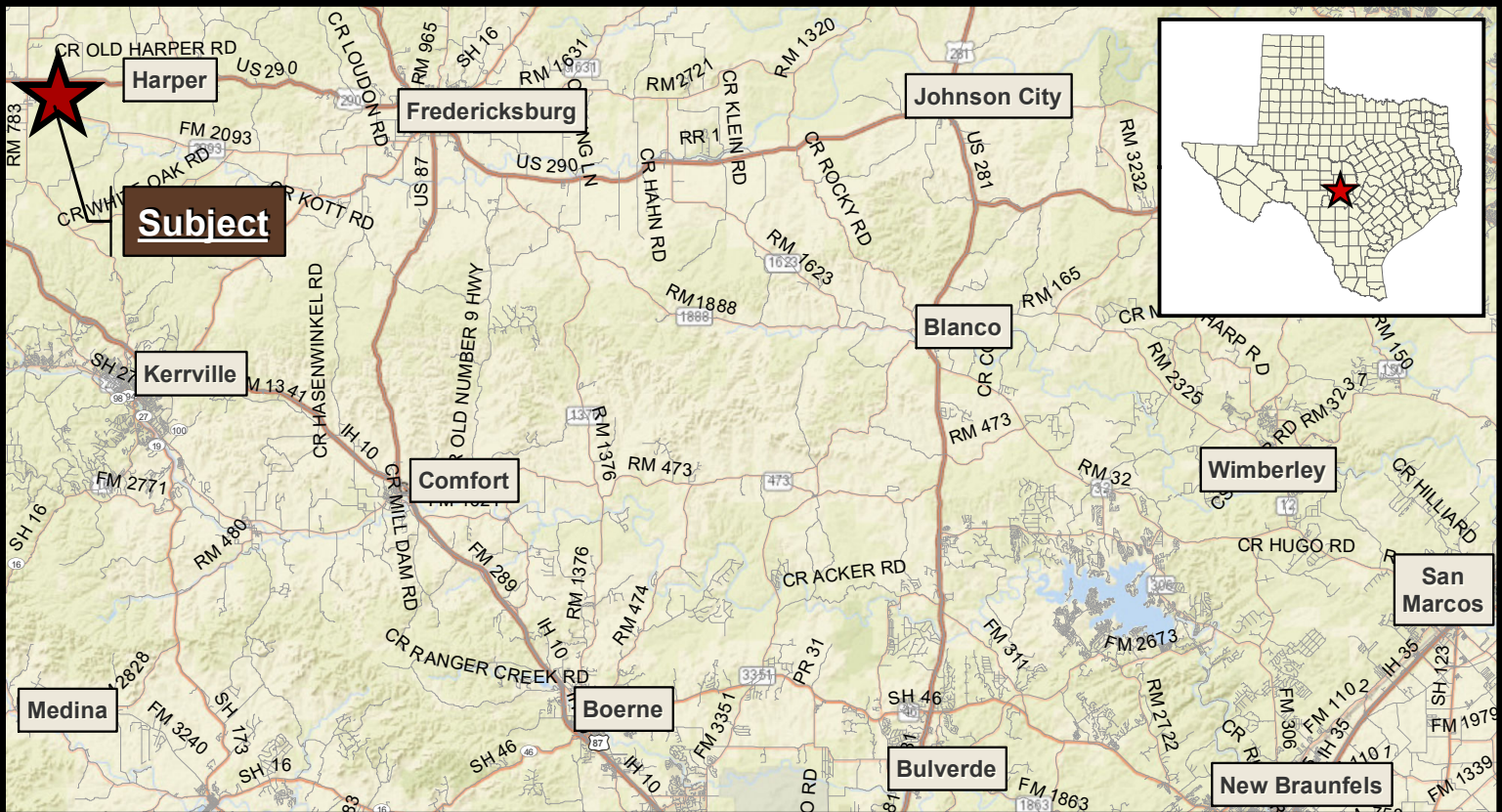
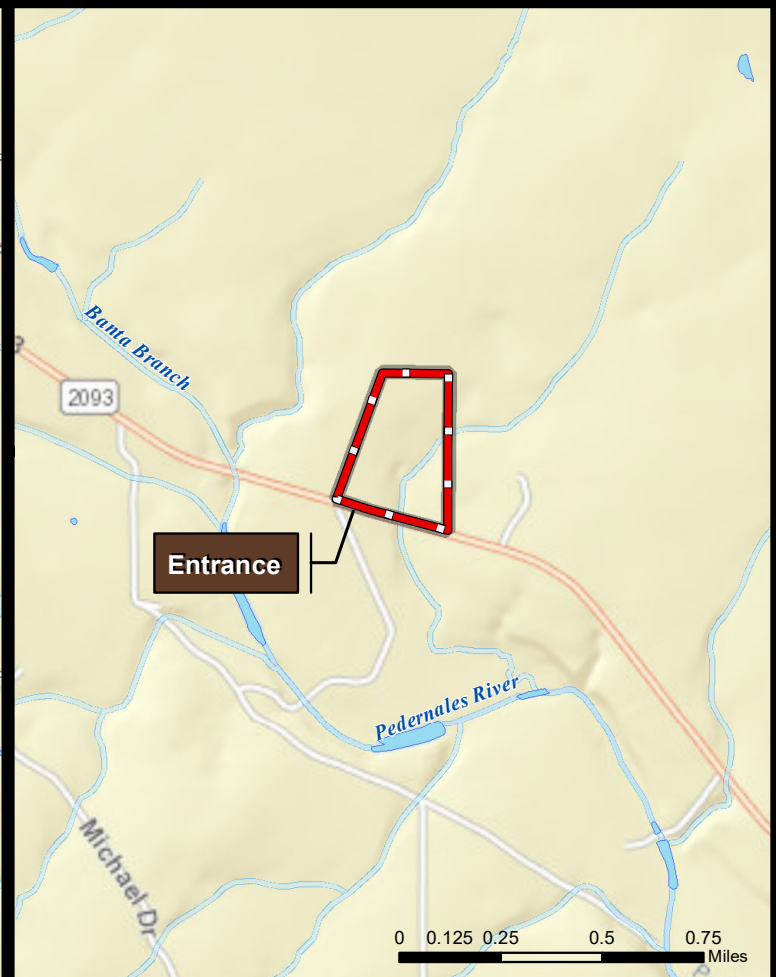
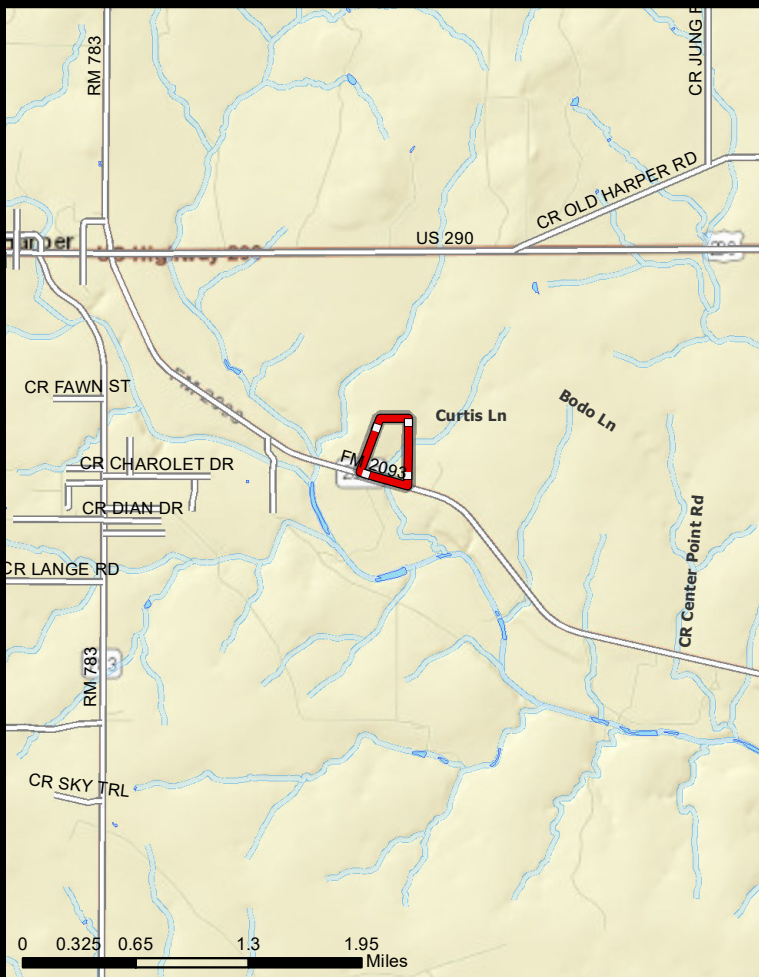


# PECAN SPRING RANCH | 36.12 ± AC | GILLESPIE



112 N. Edison St., Fredericksburg, TX 78624  
 Jeremy Lacy (830) 225-0595  
[www.AndersRanchRealty.com](http://www.AndersRanchRealty.com)



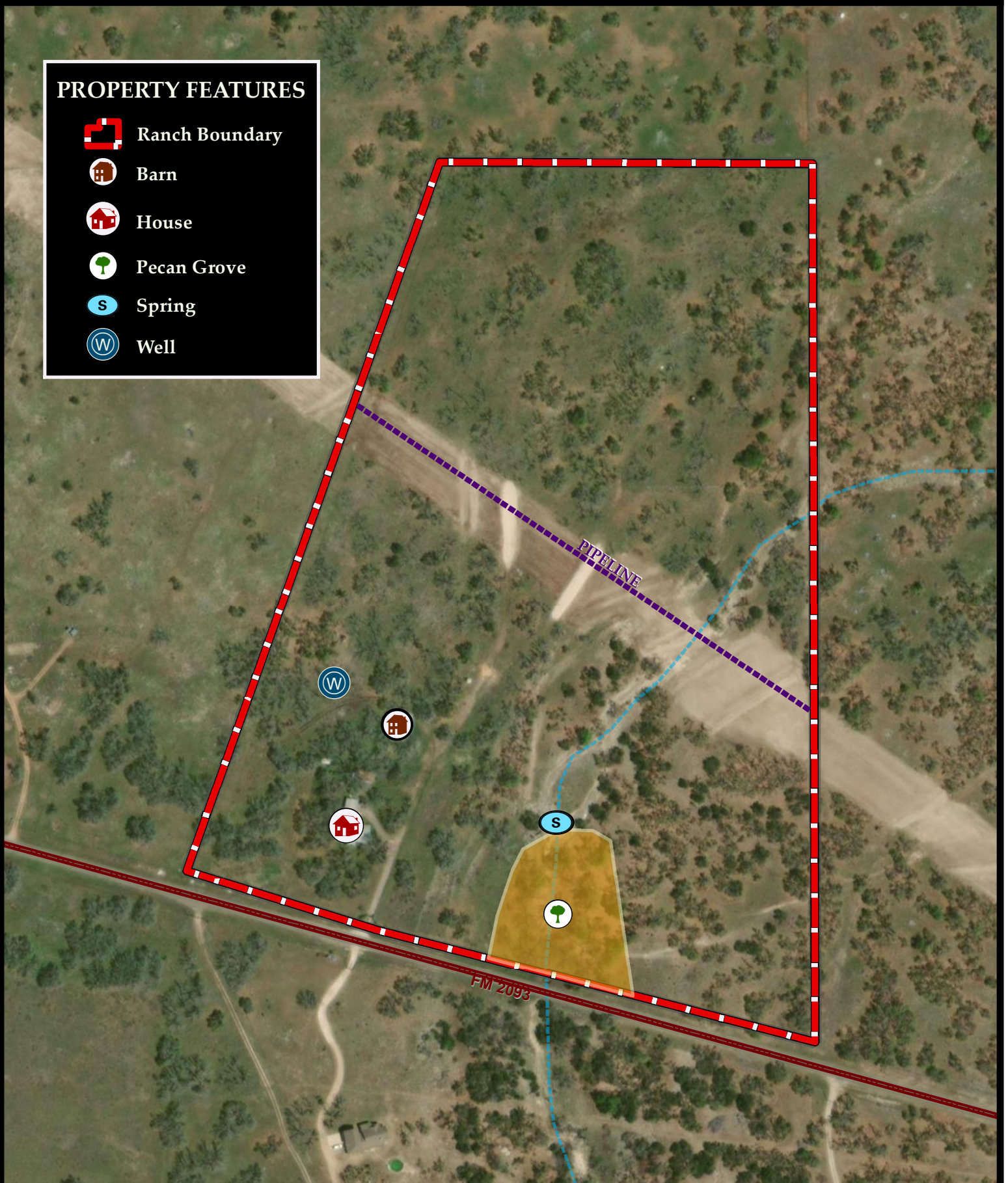
**Anders Realty**  
 PURVEYORS OF FINE TEXAS RANCHES



# PECAN SPRING RANCH | 36.12 ± AC | GILLESPIE

## PROPERTY FEATURES

-  Ranch Boundary
-  Barn
-  House
-  Pecan Grove
-  Spring
-  Well



1 inch = 250 feet

0 0.02 0.04 0.06 Miles



112 N. Edison St., Fredericksburg, TX 78624  
Jeremy Lacy (830) 225-0595  
[www.AndersRanchRealty.com](http://www.AndersRanchRealty.com)



**Anders Realty**  
PURVEYORS OF FINE TEXAS RANCHES



# PECAN SPRING RANCH | 36.12 ± AC | GILLESPIE

## PROPERTY FEATURES



Ranch Boundary



Barn



House



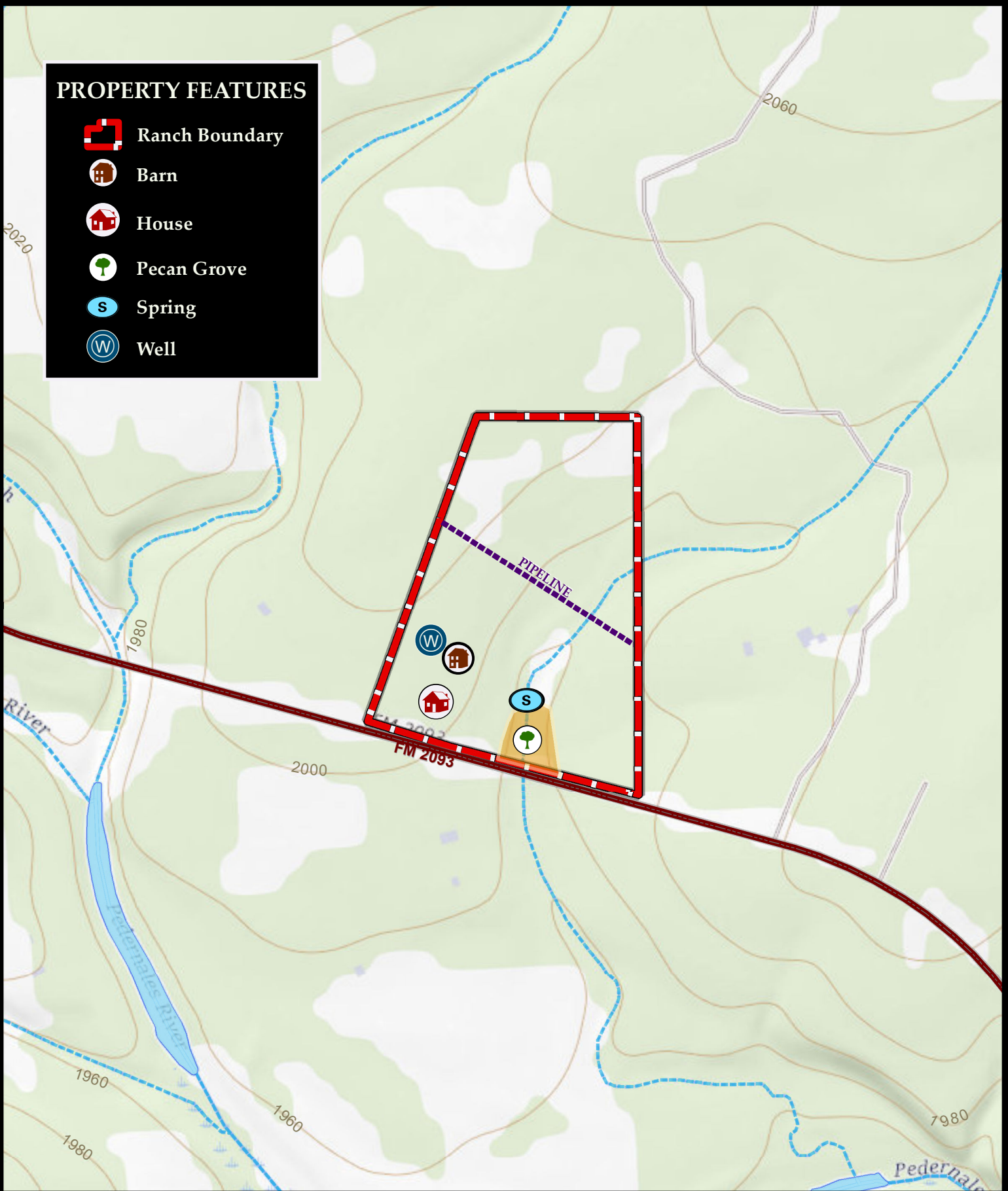
Pecan Grove



Spring



Well



1 inch = 583.33 feet



112 N. Edison St., Fredericksburg, TX 78624

Jeremy Lacy (830) 225-0595

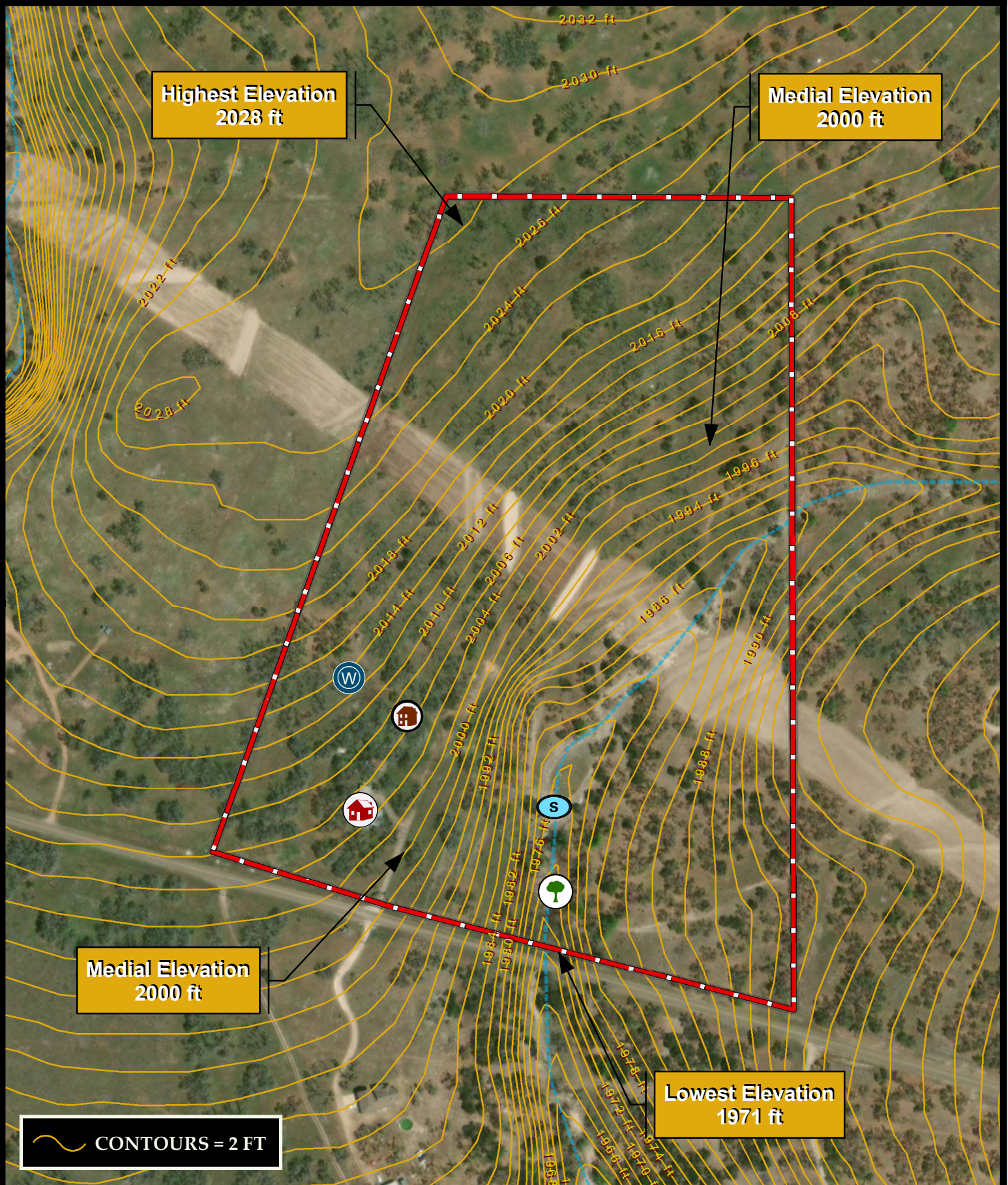
[www.AndersRanchRealty.com](http://www.AndersRanchRealty.com)



**Anders Realty**  
PURVEYORS OF FINE TEXAS RANCHES



# PECAN SPRING RANCH | 36.12 ± AC | GILLESPIE



CONTOURS = 2 FT

1 inch = 270.83 feet  
0 0.025 0.05 0.075 Miles



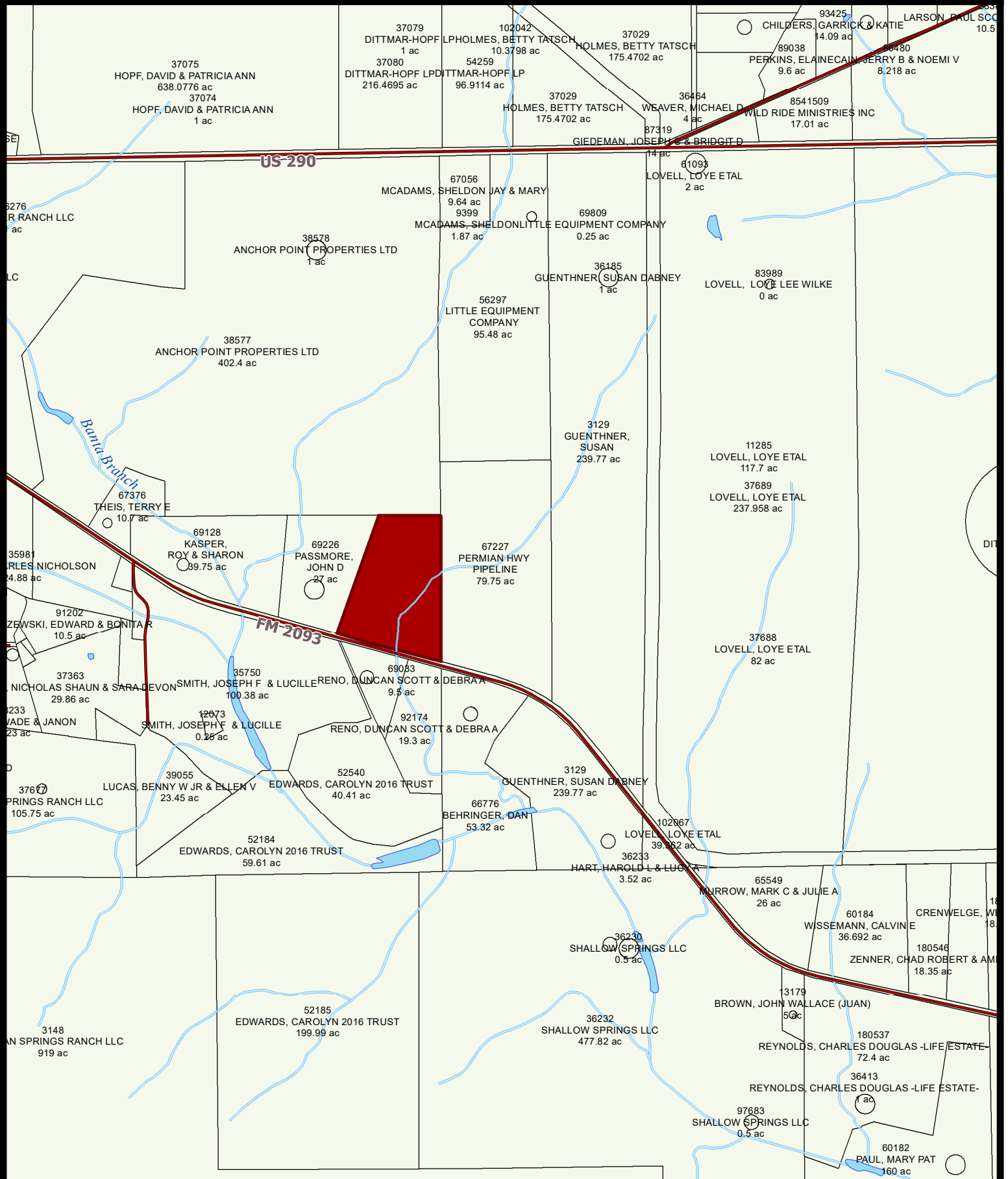
112 N. Edison St., Fredericksburg, TX 78624  
Jeremy Lacy (830) 225-0595  
www.AndersRanchRealty.com



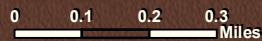
**Anders Realty**  
PURVEYORS OF FINE TEXAS RANCHES



# PECAN SPRING RANCH | 36.12 ± AC | GILLESPIE



1 inch = 1,500 feet



112 N. Edison St., Fredericksburg, TX 78624  
 Jeremy Lacy (830) 225-0595  
[www.AndersRanchRealty.com](http://www.AndersRanchRealty.com)



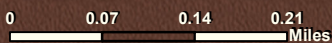
**Anders Realty**  
 PURVEYORS OF FINE TEXAS RANCHES



# PECAN SPRING RANCH | 36.12 ± AC | GILLESPIE



1 inch = 768.97 feet



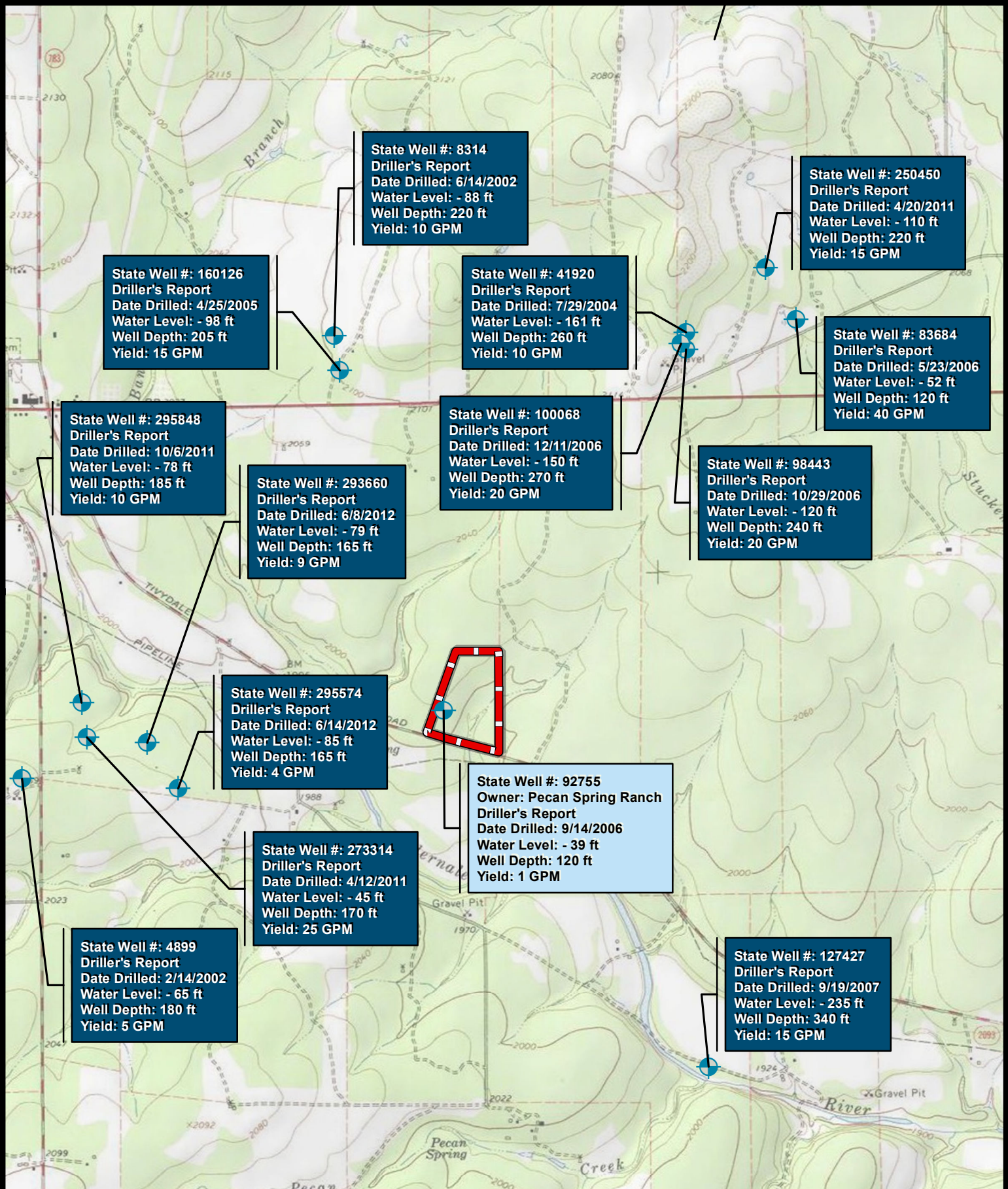
112 N. Edison St., Fredericksburg, TX 78624  
Jeremy Lacy (830) 225-0595  
www.AndersRanchRealty.com



**Anders Realty**  
PURVEYORS OF FINE TEXAS RANCHES



# PECAN SPRING RANCH | 36.12 ± AC | GILLESPIE



1 inch = 2,191.67 feet



112 N. Edison St., Fredericksburg, TX 78624  
Jeremy Lacy (830) 225-0595  
www.AndersRanchRealty.com




**Anders Realty**  
PURVEYORS OF FINE TEXAS RANCHES






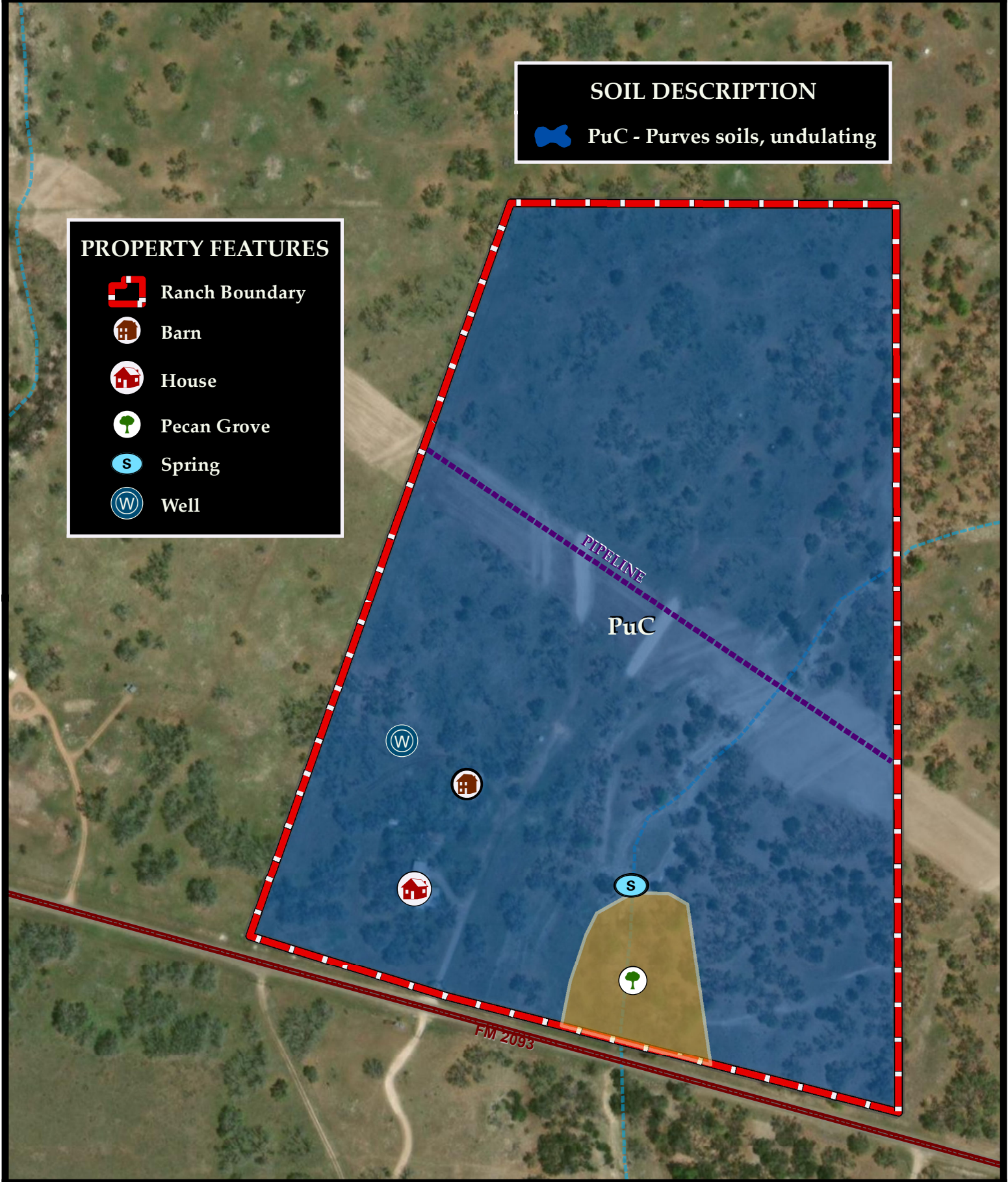
# PECAN SPRING RANCH | 36.12 ± AC | GILLESPIE

## SOIL DESCRIPTION

 PuC - Purves soils, undulating

## PROPERTY FEATURES

-  Ranch Boundary
-  Barn
-  House
-  Pecan Grove
-  Spring
-  Well



1 inch = 241.67 feet

0 0.02 0.04 0.06 Miles



112 N. Edison St., Fredericksburg, TX 78624

Jeremy Lacy (830) 225-0595

[www.AndersRanchRealty.com](http://www.AndersRanchRealty.com)



**Anders Realty**  
PURVEYORS OF FINE TEXAS RANCHES